

des.mag.

HOMA DESIGN MAGAZINE



#3

Issue No. 3
October 2023
March 2024

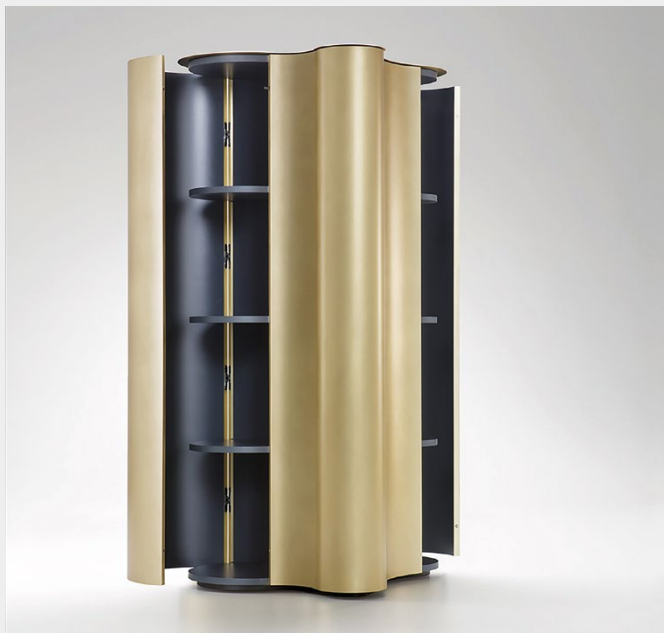
Homa

KNOLL

Womb Chair

On the 75th anniversary of its design by Eero Saarinen, Knoll commemorates one of its most iconic creations: the Womb Chair. This armchair, commissioned by Florence Knoll, revolutionised the very notion of armchairs through techniques and technologies that were truly pioneering for its time. It not only bestowed upon it a unique form but also a functionality that defied categorisation. Florence Knoll herself described it as “an armchair that resembled a basket full of pillows, a soft sanctuary in which to nestle.” The guiding principle behind the birth of the Womb Chair was the desire to satisfy our primal need for ultimate comfort—a concept proven to be universally timeless, transcending generations.

www.knolleurope.com



ph: Alberto Parise

DE CASTELLI

Ripple

The Ripple cabinet, designed by Marco Pisati, combines the inspiration drawn from the fluidity and adaptability of water with the solidity of metal. The outcome is a curvy and versatile structure, an object meticulously sculpted and refined by the constant motion of waves.

It stands as a true sculpture, inviting admiration as one circumnavigates it, following the graceful contours that define its form, admiring the metallic curves shaped by De Castelli's expert craftsmanship and the gentle interplay of shadows across its surfaces.

This seemingly impenetrable cabinet, akin to a treasure chest, unveils two concealed storage compartments, cleverly concealed behind its hollow doors, engineered to open fully at 180 degrees.

www.decastelli.com

GLAS ITALIA

Drift

A solid volume that seems to float in a liquid, emerging partially. This is the hallmark of the new collection of storage furniture designed by Nendo. The particular effect is given by the insertion of a box in black oak wood with the function of sectioned storage compartment and fixed to the furniture, so that one part remains inside and the other resting on the top, made of extra-clear tempered frosted crystal whose doors slide inside profiles in natural anodized aluminum. The furniture is made of extra-clear tempered frosted crystal, glued to UV. The doors slide inside profiles in natural anodized aluminium.

The defining characteristic of Nendo's latest collection of storage furniture is the sight of a solid volume that appears to partially emerge as if floating in a liquid. This effect is achieved through the incorporation of a segmented storage compartment box in black oak wood, which is attached to the furniture. This design allows one part of the box to remain concealed inside while the other portion rests on the top surface. The unit itself is made of extra-clear, tempered frosted crystal, securely bonded with UV adhesive. The doors smoothly slide along the rails crafted from natural, anodised aluminium.

www.glasitalia.com

